

Spokane Buddhist Temple

Volume 67, 2021 - Issue 10
This newsletter is published monthly by
the Spokane Buddhist Temple
927 S Perry Street
Spokane, WA 99202
509 534-7954



Everyone is welcome to attend all activities and services. Visit us online at:
www.spokanebuddhisttemple.org
email: spokanebuddhisttemple@gmail.com
www.Facebook.com/SpokaneBuddhistTemple

October 2021



October On-Line Service Schedule - 10:30 am

10/3	Sangha Service
10/10	Shotsukihoyo Service
10/17	**No Service from the Temple** At 10 am watch the NW District Joint Service (see below)
10/24	Sangha Service
10/31	Sangha Service

Email SpokaneBuddhistTemple@gmail.com to get on the chat & Zoom list. Most services will also be live on Facebook, and later uploaded to YouTube.

**** In-Person Services Suspended ****

Due to the delta variant and the increase in Covid cases around our area, we are going to suspend in-person services until things improve. If you are interested in joining us, please join us on-line at 10:30 am on Sundays with Zoom. Email SpokaneBuddhistTemple@gmail.com to get on the Zoom list. Most services will also be live on Facebook, and later uploaded to YouTube. We wish you all good health and peace at this time.

No Service at the Spokane Buddhist Temple on 10/17

Instead of our service

Watch the NW District Joint Service at 10 am

Watch for the link on Facebook and in chat emails. To get on the chat list, email SpokaneBuddhistTemple@gmail.com

Or look on the Seattle Betsuin website for the link:
<https://seattlebetsuin.com/>

Spokane Buddhist Temple

OCTOBER 2021

VOLUME 67 ISSUE 10



Sangha Services— Our Sangha Service (Sangha is the Sanskrit word for Buddhist community) is a traditional Jodo Shinshu service with chanting led by a Doshi. Services are at 10:30 am on Sundays at the Temple. We meet after service for refreshments and sometimes a dharma discussion.

- ◆ **GET THIS NEWSLETTER BY EMAIL**
Email: SpokaneBuddhistTemple@gmail.com
- ◆ Check out our new website at www.SpokaneBuddhistTemple.org
- ◆ **For the latest Temple Information visit our Facebook page:** www.facebook.com/SpokaneBuddhistTemple
- ◆ Visit the **Buddhist Churches of America** Website: www.BuddhistChurchesofAmerica.org
There is a wealth of information, podcasts, and information about Shin Buddhism on this site.



Left to right:
MAA Amanda Goodwin,
MA Chad Donoho,
Reverend Melissa Opel,
MA Eric Kerkove

Rinban Katsuya Kusunoki
our Supervising Minister



Spokane Buddhist Temple Team

--Supervising Minister--

Rev. Katsuya Kusunoki
Seattle Betsuin

---Minister Assistants---

Reverend Melissa Opel
MA Chad Donoho
MA Eric Kerkove
Sensei Paul Vielle (ret.)
Amanda Goodwin (Aspirant)

---2021 Board of Directors---

Becca Opel, President
Chad Donoho, Vice President
Shawn Boltz, Secretary
Lisa Geiss, Treasurer
KNona Liddell
Tina Rodeen
Patricia Ohashi
Curtis Cooley
Susan Hales

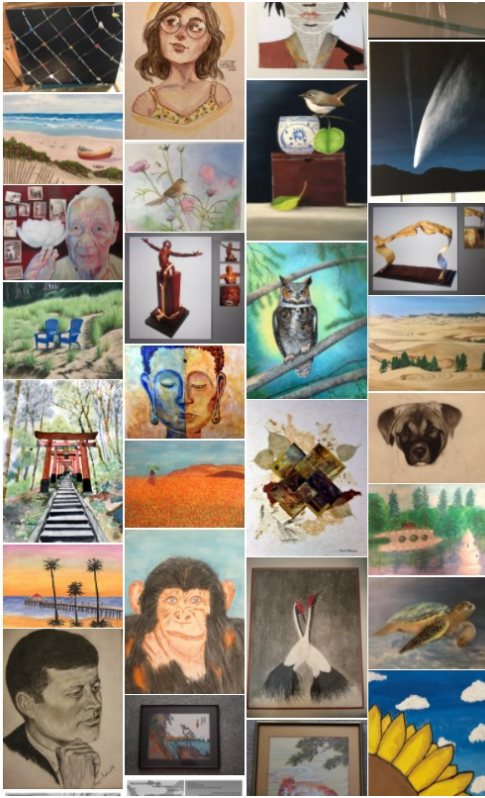
Have questions? Contact
Becca Opel
509-294-1461



Chanting At Home

Follow these links to access recordings of the following:

- Juseige https://www.buddhistchurchesofamerica.org/home/001_juseige_chanting/
- Sanbutsuge https://www.buddhistchurchesofamerica.org/home/002_sanbutsuge_chanting/
- Junirai https://www.buddhistchurchesofamerica.org/home/003_junirai_chanting/
- Ondokusan https://www.buddhistchurchesofamerica.org/home/004_ondokusan_gatha/



BCA ART EXHIBIT

Check it out.

Two temple members and two children of a temple member from Spokane have entries.

Can you pick them out?
Also many other nice entries.

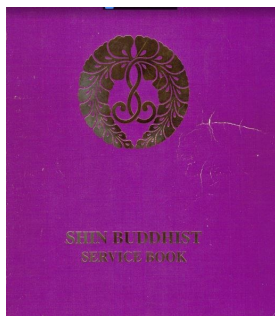
<https://www.buddhistchurchesofamerica.org/bca-art-exhibit>

Dues and Donations

We appreciate any donations to offset our expenses that keep the doors open at the Spokane Buddhist Temple. Either click on the Donation button on the website, or email a check to us. If you want 100% of your donation to go to the Temple, please send a check.

Thank you to those who have paid their dues and/or given donations
from 8-23-21 to 9-13-21:

Loren Nishimura
Rachel Landman and Patrick Solverson
Paul and Karen Vielle
Jacqui Pierce
Lisa Geiss
Stacey Carr
Steven Verhoef
Melissa and Becca Opel
Mary Naber



SERVICE BOOK TO DOWNLOAD (new link):

<http://spokanebuddhisttemple.org/recommended-reading/shin-buddhist-service-book/>

During service, we will tell you the page we are on.

October Shotsuki-Hoyo



On October 10th, as part of our service, we will have the monthly Shotsuki-Hoyo remembrance service. According to Temple records and other sources, a total of 20 people passed away during the month of October of their respective year:

Arthur "Len" Braden
Hichiro Ishikawa
(Mrs.) Hisako Kato
Tokio Konishi
Kotaro "Van" Omine
John Norisada
Jim Shimizu
Takeo Uyeji
Fred Yamamoto
Jackie Boltz

(Mrs.) Masako Imada
Yohei Kato
Yoshinobu Kimura
Teresa Lira
Seichi Nakamura
Rei Shigenobu
Kame Uyeji
Andrew Vielle
Edith Craig
Kenneth Winterroth



In September, we lost one of the earliest members of the Spokane Buddhist Temple, Haruko "Janet" Tamura.

Haruko "Janet" Tamura, a long time resident of Spokane passed away on September 13, 2021. She was born in Seattle, WA, on May 26, 1929 to Yoichi and Haruyo Oba. Her family continued to live in Seattle until they and all people of Japanese descent on the west coast were forced to move to a temporary incarceration camp in Puyallup (Camp Harmony) and later to Minidoka in southern Idaho, until 1945, eventually settling in Spokane, WA. Janet was preceded in death by her parents, her two brothers, George and Takashi, and her husband, Jim Tamura.

Janet graduated from Lewis & Clark HS, married Jim on September 10, 1950, and raised three children; Jim Jr., Patti, and Rod. She worked for 24 years for Spokane Public Schools starting in the LC bookroom and continued to work in various roles until she retired.

Janet was active doing many crafts from knitting blankets to doing Japanese Bunka; all with the idea of sharing her creations with family and friends. She also enjoyed playing many different card games including Hana-fuda, Shanghai-rummy, pinochle and bridge.

She was a member of the Spokane Buddhist Temple upon her family's residence in Spokane around 1947 until her passing. She was an active member in many of the temple's activities, including the biannual bazaars, into her 70s.

Janet is survived by her children: Jim Jr, Patti (Lane), Rod (Marie), three grandchildren: (Jenna, Jamie, Kyra) and three great-grandchildren: (Dustin, Rielee, Alaka`i) along with many nieces, nephews, and extended relatives.

A memorial service will take place the Summer of 2022, when family and relatives are able to attend, at Hennessey Funeral Home.

Over 200 Afghan Refugees are expected in Spokane in the coming weeks. World Relief of Spokane helps with refugee resettlement. They are taking donations of items for the families.

A message from Temple member Mary Naber:

Dear Temple members:

If you're like me, the situation in Afghanistan breaks my heart. It feels overwhelming, massive and it's hard to see what I can do to help. Here's the good news. When you join World Relief today, you can *make a difference*.

Here is a way to help.

I've already collected/delivered a full Elementary School kit for the families who will be arriving in Spokane soon. My Raging Grannies group really came through.

Now I am working on a Household kit (above). I will plan to ask my local hardware store to donate the cleaning supplies.

Could anyone help with the other items on the Linen Kit.

Please email me and I'll pick up and get it all together to donate to them. If you would like more information, please email me at peacenik_49@msn.com or call 509-570-6876

Household Kit (please put your name next to what item you will donate)		
Name	Phone number	
Linen Kit		
		Bed linens: twin or queen
		Blanket: twin or queen
		Comforter: twin or queen
Mary	570-6876	(2) pillows
Mary	570-6876	Towel set: bath, hand, face
		\$25 Gift card from Dollar Tree, Amazon
Cleaning Kit		
maybe will be		Plunger
donated by		Vacuum
a hardware		Broom and dust pan
store???		Toilet bowl cleaner and wand
		All Purpose Cleaner
Grannies	done	Hand Soap
NEW ITEMS ONLY, PLEASE!		

Here's some more suggestions from World Relief (www.WorldRelief.org)

1. Advocate for our Afghan families. Due to their extenuating circumstances many families will be coming with a need for legal help to clarify their immigration status. We're calling on Congress to expand and expedite life-saving protections for our Afghan Allies. Use your voice to influence those in positions of power. Let your voice be heard [HERE](#).

Continued on the next page

2. In Spokane we anticipate 200-300 Afghans arriving in the next few months. Help us create a warm welcome to our new neighbors by building a [WELCOME KIT](#). Put together a couple of kits at home or organize your community to do a drive. We also will need to help furnish our new arrivals homes. This LIST is updated often to reflect our most current needs (*they have pretty much received all the kits from local people already. I'm just finishing off the last that I will do*).

3. [DONATE](#) Due to the number of arrivals, we expect in a short amount of time, our available services and funding is more limited which could hinder our ability to serve. Your donations create a huge impact on the services we are able to provide!

4. If you are interested in organizing a donation drive. Please contact ehughes@wr.org for specific donation requests.

5. The Spokane housing market is limited at the moment and we anticipate finding permanent housing for 200-300 new people will be difficult. If you are a landlord with long-term housing available for rent, please let us know at wrspokane@wr.org. If you have a detached dwelling on your property, such as an Airbnb that is available for temporary housing, please contact us at volunteerspokane@wr.org.

Thanks for your help. Mary Naber 509-570-6876

BCA Center for Buddhist Education Every Day Buddhism Committee Presents:



“The Three Poisons in our Life”

A Shin Buddhist approach to dealing with the three poisons

Lecture and Discussion

By Rev. Marvin Harada

Bishop, Buddhist Churches of America

October 30, 2021

11:00 am – 1:00pm (PT) Zoom



Registration is Free:

Click to register <https://forms.gle/JFqMbpE7quPAVpXd9>

Donations gratefully accepted

Click to Donate <https://bca.kindful.com/> (Scroll campaigns to select CBE.

Donations are processed by BCA Endowment Foundation)

Visit buddhistchurchesofamerica.org email: cbe@bcahq.org or phone: 510.809.1460

JODO SHINSHU MODERNITY:

Introducing Transformations in the 20th & 21st Centuries

Guest Speaker:

DR. GALEN AMSTUTZ

Adjunct Faculty, Institute of Buddhist Studies & Author, *INTERPRETING AMIDA: HISTORY AND ORIENTALISM IN THE STUDY OF PURE LAND BUDDHISM*

Saturday, October 16, 2021

***11 AM - 1 PM (PST)** *Check your local time

“Shin Buddhism today is a very large and diffuse phenomenon which is not easy to get a handle on. With an emphasis on the way Shin looks to general scholars of Japan (i.e. outside, relatively objective observers), the lecture (after taking a nuanced position on what the relationship between Shinran and the Honganji organizations really has been) will introduce several main themes of the modern story:

- *how the encounter with the West created intellectual challenges for the tradition (at least for the leadership);*
- *how Shin through much of the 20th century was greatly influenced by Japanese imperialism, war and ethno-nationalism; and*
- *how Shin is responding to a significantly declining institutional situation today.”*

— Dr. Galen Amstutz



***Galen Amstutz**, (a scholar of) Pure Land, Nembutsu, Amitabha), grew up in an Asian American neighborhood in Sacramento, California. He became interested in Buddhism after teaching English in Japan in the 1970s, studied at the Institute of Buddhist Studies in Berkeley, California, and qualified as a minister of the Nishi Honganji True Pure Land organization. Later, having continued his academic study with a Ph.D. in Asian Religions from Princeton, he worked for Florida State University, the Reischauer Institute of Japanese Studies at Harvard University, and Ryukoku University in Japan. He is particularly interested in communications and interpretations problem related to Pure Land Buddhism and has published a book on the issue (*INTERPRETING AMIDA*, 1997) among other writings."

- Oxford Bibliographies



CBE Seminars Online For All (SOFA) Series

Register at www.buddhistchurchesofamerica.org/buddhist-education

Or, [click here](#). [Donations](#) are welcome and gratefully accepted

View [CBE Fall SOFA calendar and registration links](#)

Contact CBE at cbe@bcahq.org or (510) 809-1460

v8-24c







Explore topics in Jodo Shinshu doctrine, practice, and culture

FREE & OPEN TO THE PUBLIC ~ REGISTER FOR ZOOM LINK



2021 CBE Seminars Online For All FALL: SEPTEMBER ~ NOVEMBER SATURDAYS, 11 AM - 1 PM (PACIFIC TIME)

Explore topics in Jodo Shinshu Buddhist doctrine, practice & culture

<p>SEPTEMBER 18 & SEPTEMBER 25 REGISTER ONLINE https://forms.gle/ zQVGSZExumMYCvw7</p>	<p>SHINJIN - Part 1 & Part 2 Rev. Dr. David Matsumoto President, Institute of Buddhist Studies</p>	
<p>OCTOBER 16 REGISTER ONLINE https://forms.gle/ RiKhVsVgawJcPnpH8</p>	<p>JODO SHINSHU MODERNITY Dr. Galen Amstutz Adjunct Faculty, Institute of Buddhist Studies</p>	
<p>OCTOBER 23 REGISTER ONLINE https://forms.gle/ vyMunamGzBtmackz</p>	<p>日本語セミナー 本願のころ ワンドラ 睦 オレンジ郡仏教会 開教使</p>	<p>Japanese Seminar: Hongan no Kokoro Rev. Dr. Mutsumi Wondra</p> 
<p>OCTOBER 30 REGISTER ONLINE https:// forms.gle/WPxiLrBudinuQOghz6</p>	<p>CBE Every Day Buddhism Committee presents THE THREE POISONS Rev. Marvin Harada Bishop, Buddhist Churches of America (BCA)</p>	
<p>NOVEMBER 13 REGISTER ONLINE https:// forms.gle/8XXeak8cTaVnQhs8A</p>	<p>日本語セミナー 浄土真宗をととえると? 桑原 浄信 パークレー仏教会 開教使 * マリン仏教会 開教使</p>	<p>Japanese Seminar: Jodo Shinshu wo tatoeru to? Rev. Kiyonobu Kuwahara</p> 
<p>NOVEMBER 20 REGISTER ONLINE https://forms.gle/ REAsxyfArTAYZrAng</p>	<p>KOICHI'S KITCHEN Koichi Mizushima Guest Chef/ CBE Youth Program Coordinator</p>	

QUESTIONS? EMAIL: CBE@BCAHQ.ORG PHONE: (510) 809-1460

DONATIONS ARE WELCOME! PLEASE NOTE "CBE/SEMINAR DATE" IN DEDICATION BOX

REGISTER AT WWW.BUDDHISTCHURCHESOFAMERICA.ORG/BUDDHIST-EDUCATION
OR, [DOWNLOAD THIS FLYER IN PDF FORMAT TO ACTIVATE REG LINKS](#)

V.03.20

2021 Pledge Form



Dear Members and Friends:

When you find yourself taking refuge in the Three Treasures (Buddha, Dharma, and Sangha) and feel like this is a place where you would like to grow, then perhaps you'll consider membership to the Spokane Buddhist Temple.

The concept of Dana (selfless giving) is not only a Buddhist teaching but a manner of how we exist and do business. Dana comes in many forms; not only monetary, but also your time and talents. Membership empowers individuals who rely on the nembutsu to remember their responsibility to help sustain the Dharma in Spokane and surrounding area.

By joining or renewing your membership, you honor the legacy of the families and individuals who founded this Temple in 1945 and will help maintain the foundation for the future. Your membership is critical for keeping the Dharma alive in Spokane for the benefit of current and future generations.

**In Gassho,
Spokane Buddhist Temple Trustees**

Membership pledges are made/renewed on a yearly basis every November and can be paid in numerous ways and increments. Pledges can be paid by check, credit card, or an e-check from your financial institution. You can pay annually, semiannually, quarterly, or monthly.

Individuals who make pledges of \$240 or more are sustaining members of the Temple. Those contributing at lower levels are non-voting associate members of the Temple. Although \$240 is the minimum pledging amount for sustaining membership, additional pledges are greatly appreciated. It costs about \$50,000 annually to run the Temple, including: operating expenses, building upkeep, visiting minister costs, our minister's education, and dues to the Buddhist Churches of America (BCA) and the NW District. Membership pledges make up about 25% of our revenue, and we depend on them to be able to keep the Dharma alive in our community.

Printed Name (s) _____ Signature (s) _____

Address _____

Phone numbers _____

Emails _____

Payment method (please check) check e-check cash credit card

Payment frequency (please check) annually semi-annually quarterly monthly

Pledge amount for current year \$ _____

* Please consult your tax advisor for specific questions related to charitable donations.

* If over the age of 70 ½ please consult your financial planner for using your required minimum distribution for charitable donations.

*Members of the Spokane Buddhist Temple are always welcome to request our financial records. Please contact the treasurer if you would like information on the Temple's budget and financial holdings.

**Spokane Buddhist Temple, 927 S. Perry, Spokane, WA 99202
Email: SpokaneBuddhistTemple@gmail.com**