



Mark your calendars:

TERIYAKI FEST

Spring Food Festival Fundraiser

April 18th - 11 am-3 pm (or when we sell out)

Support the Temple

plus 10% is going to Jewels Helping Hands

ALL TAKE OUT - NO PRE-ORDERS

Chicken Teriyaki Bowl	\$10
Tofu Teriyaki Bowl	\$10
Mochi Desserts (assorted)	\$5
Water	\$.50

Teriyaki Bowls: Chicken Teriyaki or Tofu Teriyaki over rice with veggie stir fry (contains wheat & soy)



Cash preferred but cards and checks will gladly be accepted

A fundraiser within a fundraiser?! The Spokane Buddhist Temple is gearing up to make our famous Teriyaki Bowls for take out. 10% of the proceeds will go towards *Jewels Helping Hands*, who is housing and supporting so many of our homeless population. Hopefully the weather will be nice out and you can grab a bite and head to the park.

Masks required, we are following Covid mandates

*****We need volunteers on 4/17 & 4/18*****



Sign up for Temple emails to get any updates & to volunteer at SpokaneBuddhistTemple@gmail.com



Spokane Buddhist Temple

Volume 67, 2021 - Issue 4
 This newsletter is published monthly by
 the Spokane Buddhist Temple
 927 S Perry Street
 Spokane, WA 99202
 509 534-7954



Everyone is welcome to attend all activities and services. Visit us online at:
www.spokanebuddhisttemple.org
 email: spokanebuddhisttemple@gmail.com
www.facebook.com/SpokaneBuddhistTemple

April 2021

*Due to Covid-19,
 the Temple building is closed until further notice.
 Stay tuned for possible upcoming outdoor services.*

Virtual Services at Spokane Buddhist Temple



We are now holding virtual services via Zoom. Services are each Sunday through April 2021, usually at 10:30 am.

The service is also being live-streamed on Facebook. You can view this service live stream anytime afterwards on Facebook or YouTube. After the service, we will turn off the live feed and you may stay and socialize and discuss the Dharma Message. Please email the temple at SpokaneBuddhistTemple@gmail.com to get the Zoom login

by email.

Namo Amida Butsu,

Reverend Melissa Opel, MA Chad Donoho, Amanda Goodwin, MA in training

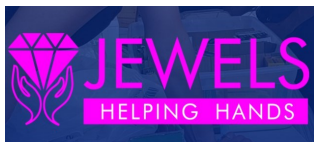
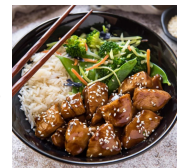
April Schedule

- | | | |
|------|------------------|--|
| 4/4 | **10 am** | Hanamatsuri Service (see page 3) <i>Get the new Zoom link</i> |
| 4/11 | 10:30 am | Sangha Service & Shotsuki-hoyo |
| 4/18 | 11a-3p | Teriyaki Fest Food Fundraiser - no service |
| 4/25 | 10:30 am | Sangha Service |

Teriyaki Fest - Spring Food Festival - See Pg. 1 April 18th - 11 am-3 pm (or when we sell out)

ALL TAKE OUT: `Chicken Teriyaki Bowl * Tofu Teriyaki Bowl * Mochi Desserts

Details to follow on Facebook and Temple emails. Sign up for Temple emails to get details. Email: SpokaneBuddhistTemple@gmail.com. No preorders.



See Page 5 for our Fundraiser
 for Jewels Helping Hands

See Page 5 for the upcoming
 Rummage Sale



Spokane Buddhist Temple

APRIL 2021

VOLUME 67 ISSUE 4



Sangha Services— Our Sangha Service (Sangha is the Sanskrit word for Buddhist community) is a traditional Jodo Shinshu service with chanting led by a Doshi. Services are at 10:30 am on Sundays at the Temple. We meet after service for refreshments and sometimes a dharma discussion.

- ◆ **GET THIS NEWSLETTER BY EMAIL**
Email: SpokaneBuddhistTemple@gmail.com
- ◆ Check out our new website at **www.SpokaneBuddhistTemple.org**
- ◆ **For the latest Temple Information visit our Facebook page:** www.facebook.com/SpokaneBuddhistTemple
- ◆ Visit the **Buddhist Churches of America** Website: www.BuddhistChurchesofAmerica.org
There is a wealth of information, podcasts, and information about Shin Buddhism on this site.



Reverend Melissa Opel and MA Chad Donoho



Amanda Goodwin
Minister's Assistant in training



Rinban Katsuya Kusunoki
our Supervising Minister

Spokane Buddhist Temple Team

--Supervising Minister--

Rev. Katsuya Kusunoki
Seattle Betsuin

---Minister Assistants---

Reverend Melissa Opel
MA Chad Donoho
Sensei Paul Vielle (ret.)
Amanda Goodwin (Aspirant)

---2021 Board of Directors---

Becca Opel, President
Chad Donoho, Vice President
Shawn Boltz, Secretary
Lisa Geiss, Treasurer
KNona Liddell
Tina Rodeen
Patricia Ohashi
Curtis Cooley
Susan Hales

Have questions? Contact
Becca Opel
509-294-1461
alwaysalotus@gmail.com

Chanting At Home

Follow these links to access recordings of the following:

- Juseige https://www.buddhistchurchesofamerica.org/home/001_juseige_chanting/
- Sanbutsuge https://www.buddhistchurchesofamerica.org/home/002_sanbutsuge_chanting/
- Junirai https://www.buddhistchurchesofamerica.org/home/003_junirai_chanting/
- Ondokusan https://www.buddhistchurchesofamerica.org/home/004_ondokusan_gatha/

Hanamatsuri – Sangha Service Celebrating the Birth of Buddha

Sunday — April 4th — 10:00 am

*****NOTE TIME CHANGE: 10 AM*****

Joint Zoom service with the Yakima Buddhist Church



Hanamatsuri, literally flower festival, is celebrated in April, commemorating the birth of Siddhartha Gautama, who became enlightened and is known as Buddha.

According to our tradition, the historical Buddha, Shakyamuni, was born in Nepal on April 8, 566 B.C. He was born the son of King Suddohana and Queen Maya. There are many flowery descriptions of the scene at his birth, including celestial birds singing beautiful songs, beautiful flowers, and a sweet gentle rain bathing the baby Buddha. It is not necessarily the beauty of the

flowers, the sounds of the celestial birds, nor the sweet gentle rain that fell, but the vibrant fact that on this day was born the greatest of sentient beings who became the Enlightened One, the Buddha.

A special altar—the **Hanamido**—is erected and decorated with flowers representing the garden in Lumbini, southern Nepal, where it is said that Queen Maya went into labor. A statue of the infant Buddha is placed in a pan and, in a ritual known as kanbutsu, water or sweet tea is poured over it in remembrance of the “sweet rain” that descended from heaven at the moment of the birth.

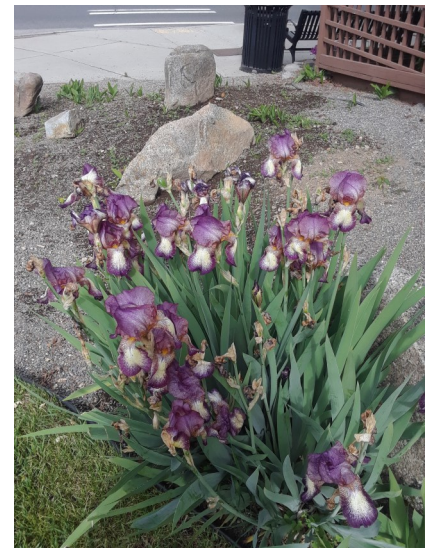


We will have a different Zoom link for this service. Email the Temple for that link at SpokaneBuddhistTemple@gmail.com.

LANDSCAPING COORDINATOR NEEDED

As Spring approaches, our beautiful Temple grounds will need some work. We are looking for someone who can coordinate outdoor maintenance. This person would not need to perform the maintenance work themselves, but would periodically check the Temple grounds for issues, meet workers (ex., yard care) at the Temple, help with getting estimates for work as needed, etc.

Email SpokaneBuddhistTemple@gmail.com





YOU KNOW IT DON'T YOU? YOU'VE GOT TOO MUCH STUFF!!

We are having a rummage sale MAY 15th at the temple. So get sorting and bring us most anything Except clothes, broken electronics and giant old TV's. We'd love – decorating items, kitchen stuff, tools, sports equipment, puzzles, games, jewelry, purses, scarves, belts, portable furniture, coins, plant starts. Contact – dcsterrett@yahoo.com to schedule a time for me to pick up or to meet you at the temple to drop off your items.

To make this a successful and fun event we will need help! If you are able to give us a couple of hours of your time please let me, Tricia Ohashi or Becca Opel know – tohashi80@gmail.com & alwaysalotus@gmail.com. Thank you – Celeste Sterrett



Aiding One Another: A Fundraiser for *Jewels Helping Hands*

Good news about our fundraising for the Homeless Center run by Jewels Helping Hands - - Not only have our donations helped Jewels with January and February electric bills - - we also have enough to help with the March electric bill.

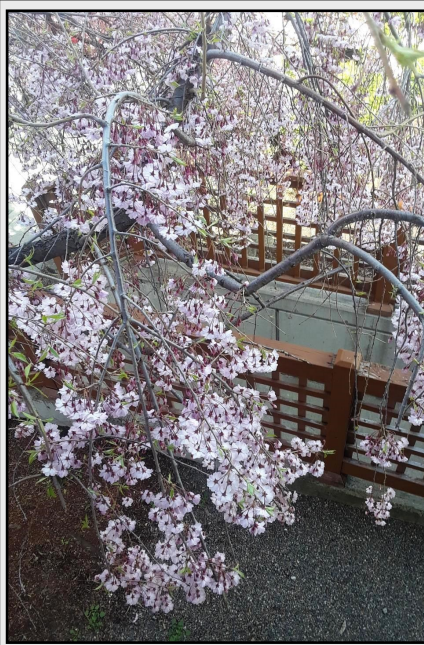
We hope that everyone continues to donate so our Temple can continue to help past March. Jewels has relocated the Homeless Center to the Women's Club on 9th Ave. On Friday, representing our Welfare Committee, Celeste Sterrett, Tricia Ohashi and I visited the new site. It is amazing - - beautifully run and focused on empowering people out of homelessness into jobs, apartments and economic independence - - full lives.

For our Temple to become more involved at a personal level, we are trying out making **sandwiches** to deliver to the Center. Jewels needs 100 sandwiches a day. We've made sandwiches twice now and we are hopeful that we can soon have larger sandwich making get togethers. This is a pilot project. We'll be figuring out where is the least expensive bread, jam, etc., how long it takes, and just how to do it.

We invited Julie Garcia, the head of Jewels Helping Hands to speak at our service on March 28th. You can view her talk on our Facebook page or on YouTube on our channel: (<https://www.youtube.com/channel/UCRmfShWxEWIWFztK80Uy55Q>) under "Videos".

Social Welfare Committee

For more about *Jewels Helping Hands*, see <https://jewelshelpinghands.org>, or join them on Facebook.



April Shotsuki-Hoyo

On April 11th, as part of our virtual service, we will have the monthly Shotsuki-Hoyo remembrance service. According to Temple records and other sources, a total of 18 people passed away during the month of April of their respective year:

Craig Bruebaker
Takeshi Kan
Isako Mary Kimura
Mariechen Oldsen Morgenstern
Yasumasa Moriya
Chiyono Nakanishi
Mary Barna Twiner
Chiyono Yamaguchi
Tomiko Yamamoto

Koji Hayashi
Akira Katayama
Kazuo "Kaz" Kuwada
Walter Kurt Morgenstern
John Naber
Minoru Terao
Bradley Whitehouse
Fumi Uyeji
Kenneth Clark



BCA
Life of Gratitude

Check out the new Website for the
Buddhist Churches of America:
<https://www.buddhistchurchesofamerica.org/>



SEEN BUDDHIST
SERVICE BOOK

Other on-line sources of the Dharma you might want to check out:

Website "Everyday Buddhist" <https://www.everydaybuddhist.org/>

Buddhist Churches of America website <https://www.buddhistchurchesofamerica.org/>

SERVICE BOOK TO DOWNLOAD:

Thank you to Rev. Dr. Takashi Miyaji for scanning the BCA service book (300+ pages) that we use at the Temple. What a wonderful resource for all to practice while we are at home practicing social distancing.

It can be found at:

https://drive.google.com/file/d/18K14SOj0EyQPmaF9NHcC5m1nLBJL6PDA/view?fbclid=IwAR2aD6JKqj-RQqapONoYXe98r5vKpR0xmBr7AKLpZBjpdA1_WDkPvphfPQQ



Message from Bishop Marvin Harada

A Reflection on the Rise of Asian Hate Crimes

We have all been concerned about recent events in the news about the rise of hate crimes and violence against Asians.

It feels like as human beings, we are going backwards in time to the era of our parents, grandparents, and great-grandparents, many of whom lived through prejudice and discrimination against Asians. Some of you today lived through that era firsthand, being incarcerated in the internment camps. My mother, who is 92, was one such person. She also faced discrimination growing up in Hood River, Oregon. But you wouldn't know it now. She has friends of all ethnicities.

The other day, she received a phone call from a Hispanic woman whose family worked on our farm. This woman called to thank my mom for taking her and her sister to elementary school when she was a young girl to get an education. Because she got an education, she had a wonderful life. Fifty years later, she called to express her gratitude.

Buddhism teaches us to see our true essence that is beyond race, gender, social economic background, sexual orientation, gender expression, religious faith, physical disability, and so on. Why can't the rest of the world see the world of oneness that we are taught in Buddhism?

Thich Nhat Hanh, the wonderful Vietnamese Buddhist master, uses a wonderful metaphor of chocolate chip cookies to illustrate what happens when we fail to see our true essence.

He says, when you make cookies, you put all the ingredients in the bowl and mix them together. You know they all have the same ingredients, but what if after you put them on the cookie sheet, some cookies think, "I am the perfect cookie. I am the perfect color. That cookie is too dark. That cookie is too light."

Isn't that absurd? The cookies are of the same essence, and so are we. How can we single out ourselves as superior or inferior by the color of our skin or by any kind of distinction? But yet, isn't that what is occurring in the world today, and has been occurring for eons?

I think our greatest response to a world that is tending towards hatred and violence is to share our view of the world as Buddhists, to see our true essence and essential oneness of all beings, of all of life. As Shinran Shonin so eloquently expresses in his words, "May the Buddha-Dharma spread and may the world be at peace."

Namuamidabutsu,

Rev. Marvin Harada, Bishop
Buddhist Churches of America



Buddhist Churches of America Education

BCA Education is open to all and on line.

To Register, Go to <https://www.buddhistchurchesofamerica.org/buddhist-education>



03 Sat Apr Innovations and Challenges with Taiko Online / Online Event



10 Sat Apr Buddhism Beyond Mindfulness / Online Event



10 Sat Apr Socially Engaged Buddhism / Online Event



17 Sat Apr 3 Bishops: What is the Future of Buddhism in the West? / Online Event



24 Sat Apr BYR Middle School Youth Event / Online Event



24 Sat Apr 2021 BCA Youth Events / Webinar



CBE SEMINARS ONLINE FOR ALL

FREE & OPEN TO THE PUBLIC - REGISTER FOR ZOOM LINK

**Pacific Time - Check local time zone*

SATURDAY, APRIL 10, 5 PM - 6:30 PM (*PACIFIC)

SOCIALLY ENGAGED BUDDHISM :

Jodo Shinshu Perspectives

What is "Socially Engaged Buddhism"? What are some examples of Buddhist social engagements in Japan and elsewhere? How do we apply the idea of socially engaged Buddhism to a Jodo Shinshu life guided by the Nembutsu?

Guest Speakers:

Prof. Mitsuya Dake
Graduate School of Intercultural Communications,
Ryukoku University, Kyoto, Japan



Prof. Dake is on the faculty of Ryukoku University's Graduate School of Intercultural Communications, and is director of its Center for the Studies of South Asia. He received his masters degree from Ryukoku and has completed his Ph.D. courses for literature. His areas of research include: Shinran Thought; Engaged Buddhism; and Inter-faith Dialogue. He serves on the editorial board of the journal, *Contemporary Voices of Daito*.

Rev. Kiyonobu Kuwahara
Supervising Minister, Berkeley Buddhist Temple
Manager, Jodo Shinshu International Office



Rev. Kuwaharahas a master's degree in Jodo Shinshu Studies from the Institute of Buddhist Studies and Ryukoku University, and completed the Ryukoku Ph.D. program in Jodo Shinshu studies. He has also served as co-director of the BCA Center for Buddhist Education; coordinator for the Hongwanji Office of the BCA Jodo Shinshu Center; and staff member of the International Department of the Jodo Shinshu Hongwanji-ha.

REGISTER ONLINE ~ FREE

<https://forms.gle/dtkiF6w47Fz4TpCN9>

DONATIONS GRATEFULLY ACCEPTED - CLICK TO DONATE

<https://bca.kindful.com/campaigns/232361?utf8=%E2%9C%93&campaigns-232361&amount=>

VISIT: [BUDDHISTCHURCHESOFAMERICA.ORG](https://www.buddhistchurchesofamerica.org) EMAIL: CBE@BCAHQ.ORG TEL: 510.809.1460

2021 Pledge Form



Dear Members and Friends:

When you find yourself taking refuge in the Three Treasures (Buddha, Dharma, and Sangha) and feel like this is a place where you would like to grow, then perhaps you'll consider membership to the Spokane Buddhist Temple.

The concept of Dana (selfless giving) is not only a Buddhist teaching but a manner of how we exist and do business. Dana comes in many forms; not only monetary, but also your time and talents. Membership empowers individuals who rely on the nembutsu to remember their responsibility to help sustain the Dharma in Spokane and surrounding area.

By joining or renewing your membership, you honor the legacy of the families and individuals who founded this Temple in 1945 and will help maintain the foundation for the future. Your membership is critical for keeping the Dharma alive in Spokane for the benefit of current and future generations.

**In Gassho,
Spokane Buddhist Temple Trustees**

Membership pledges are made/renewed on a yearly basis every November and can be paid in numerous ways and increments. Pledges can be paid by check, credit card, or an e-check from your financial institution. You can pay annually, semiannually, quarterly, or monthly.

Individuals who make pledges of \$240 or more are sustaining members of the Temple. Those contributing at lower levels are non-voting associate members of the Temple. Although \$240 is the minimum pledging amount for sustaining membership, additional pledges are greatly appreciated. It costs about \$50,000 annually to run the Temple, including: operating expenses, building upkeep, visiting minister costs, our minister's education, and dues to the Buddhist Churches of America (BCA) and the NW District. Membership pledges make up about 25% of our revenue, and we depend on them to be able to keep the Dharma alive in our community.

Printed Name (s) _____ Signature (s) _____

Address _____

Phone numbers _____

Emails _____

Payment method (please check) check e-check cash credit card

Payment frequency (please check) annually semi-annually quarterly monthly

Pledge amount for current year \$ _____

* Please consult your tax advisor for specific questions related to charitable donations.

* If over the age of 70 ½ please consult your financial planner for using your required minimum distribution for charitable donations.

*Members of the Spokane Buddhist Temple are always welcome to request our financial records. Please contact the treasurer if you would like information on the Temple's budget and financial holdings.

Spokane Buddhist Temple, 927 S. Perry, Spokane, WA 99202
Email: SpokaneBuddhistTemple@gmail.com