

Spokane Buddhist Temple

Volume 67, 2021 - Issue 2
This newsletter is published monthly by
the Spokane Buddhist Temple
927 S Perry Street
Spokane, WA 99202
509 534-7954



Everyone is welcome to attend all activities and services. Visit us online at:
www.spokanebuddhisttemple.org
email: spokanebuddhisttemple@gmail.com
www.Facebook.com/SpokaneBuddhistTemple

February 2021

*Due to Covid-19,
the Temple building is closed until further notice.*



Services Resume Virtually at Spokane Buddhist Temple

We are now holding virtual services via Zoom. Services are each Sunday through March 14, 2021 at 10:30 am.

The service is also being live-streamed on Facebook. You can view this service live stream anytime afterwards on Facebook or YouTube. After the service, we will turn off the live feed and you may stay and socialize and discuss the Dharma Message.

Please email the temple at SpokaneBuddhisttemple@gmail.com to get the Zoom login by email.

Namo Amida Butsu,
Reverend Melissa Opel, MA Chad Donoho, Amanda Goodwin, MA in training

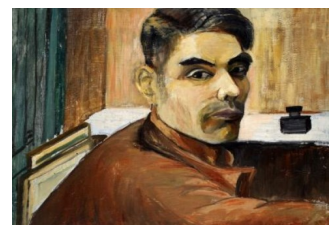
February Virtual Service Schedule—10:30 am

- | | |
|------|--|
| 2/7 | Sangha Service |
| 2/14 | Nirvana Day Service & Shotsuki-hoyo - See Pg 3 |
| 2/21 | Sangha Service |
| 2/28 | Sangha Service |



**See Page 3 for our
Fundraiser for
Jewels Helping Hands**

**See Page 7 for
Witness to Wartime
The Painted Diary of Takuichi Fujii**



Spokane Buddhist Temple

FEBRUARY 2021 VOLUME 67 ISSUE 2



Sangha Services— Our Sangha Service (Sangha is the Sanskrit word for Buddhist community) is a traditional Jodo Shinshu service with chanting led by a Doshi. Services are at 10:30 am on Sundays at the Temple. We meet after service for refreshments and sometimes a dharma discussion.

- ◆ **GET THIS NEWSLETTER BY EMAIL**
Email: SpokaneBuddhistTemple@gmail.com
- ◆ Check out our new website at **www.SpokaneBuddhistTemple.org**
- ◆ **For the latest Temple Information visit our Facebook page:** www.facebook.com/SpokaneBuddhistTemple
- ◆ Visit the **Buddhist Churches of America** Website: www.BuddhistChurchesofAmerica.org
There is a wealth of information, podcasts, and information about Shin Buddhism on this site.



Reverend Melissa Opel and MA Chad Donoho



Amanda Goodwin
Minister's Assistant in training



Rinban Katsuya Kusunoki
our Supervising Minister

Spokane Buddhist Temple Team

--Supervising Minister--
Rev. Katsuya Kusunoki
Seattle Betsuin

---Minister Assistants---
Reverend Melissa Opel
MA Chad Donoho
Sensei Paul Vielle (ret.)
Amanda Goodwin (Aspirant)

---2021 Board of Directors---
Becca Opel, President
Chad Donoho, Vice President
Shawn Boltz, Secretary
Lisa Geiss, Treasurer
KNona Liddell
Tina Rodeen
Patricia Ohashi
Curtis Cooley
Susan Hales

Congratulations to Susan Hales for serving the Temple by joining the 2021 Board.

Thank you to KNona Liddell for staying for another term.

Have questions? Contact
Becca Opel
509-294-1461
alwaysalotus@gmail.com

Chanting At Home

Follow these links to access recordings of the following:

- Juseige https://www.buddhistchurchesofamerica.org/home/001_juseige_chanting/
- Sanbutsuge https://www.buddhistchurchesofamerica.org/home/002_sanbutsuge_chanting/
- Junirai https://www.buddhistchurchesofamerica.org/home/003_junirai_chanting/
- Ondokusan https://www.buddhistchurchesofamerica.org/home/004_ondokusan_gatha/



"The world is afflicted by death and decay. But the wise do not grieve, having realized the nature of the world." –The Buddha

realbuddhaquotes.com

We will observe **Nirvana Day** on *February 14th*.

The day commemorates the death of the historical Buddha and his entry into final or complete Nirvana. Nirvana Day is a time for contemplation of the Buddha's teachings. The Buddha died at the age of 80 in the company of his monks. The Buddha knew his life was at an end, and he assured his monks that he had withheld no spiritual teaching from them. He urged them to maintain the teachings so that they would continue to help people through the ages to come.

Finally he said, "All conditioned things are subject to decay. Strive for your liberation with diligence." Those were his last words.



Aiding One Another: A Fundraiser for Jewels Helping Hands

Feeling thankful for all we have and wanting to help those in need in our community, the Spokane Buddhist Temple is raising money for *Jewels Helping Hands*. Our goal is \$1,000.

Jewels is an all-volunteer, local, non-profit organization that runs a warming shelter and helps with the many needs of the homeless of Spokane. Right now, *Jewels* needs help with their electric bill. The \$1,000 we raise will keep the shelter warm and open through February.

You may donate on our website: spokanebuddhisttemple.org, by clicking on "Donate to Jewels Helping Hands," or you may mail a check made out to the Temple with the memo line: "donation to Jewels Helping Hands." To build on your donation, we will apply to the Buddhist Churches of America for matching funds when our fundraising goal is reached.

For more about *Jewels Helping Hands*, see <https://jewelshelpinghands.org> and also, join them on [Facebook](#).

February Shotsuki-Hoyo



On February 14th, as part of our virtual service, we will have the monthly Shotsuki-Hoyo remembrance service. According to Temple records and other sources, a total of 15 people passed away during the month of February of their respective year:

Alpha Mae Clark
Karsten Nis Oldsen
Hazuo Horita
Tsutae Muraoka
Edward Parker
Evelynn Beler Vielle
Midori Yamasaki
Wilson Burdett

John Goodsen
Shirley Bennett
Mary Ikebe
Nobuichi Nitta
Ito Tanaka
Masao "Mas" Wada
Chiyeko Yamauchi



BCA
Life of Gratitude

**Check out the new Website for the
Buddhist Churches of America:
<https://www.buddhistchurchesofamerica.org/>**

Examples of information about Shin Buddhism on the site

Learn	Includes Basics of Buddhism, Buddhism in Your Life, Buddhism for Kids & FAQs
News & Media	Wheel of Dharma newsletter, Bishop's Messages, CBE Seminars
Join Us	Watch Services on Line



SHIN BUDDHIST
SERVICE BOOK

Other on-line sources of the Dharma you might want to check out:

Website "Everyday Buddhist" <https://www.everydaybuddhist.org/>

Buddhist Churches of America website <https://www.buddhistchurchesofamerica.org/>

SERVICE BOOK TO DOWNLOAD:

Thank you to Rev. Dr. Takashi Miyaji for scanning the BCA service book (300+ pages) that we use at the Temple. What a wonderful resource for all to practice while we are at home practicing social distancing.

It can be found at:

https://drive.google.com/file/d/18K14SOj0EyQPmaF9NHeC5m1nLBjL6PDA/view?fbclid=IwAR2aD6JKqj-RQqapONoYXe98r5vKpR0xmBr7AKLpZBjpdA1_WDkPvphfPQQ

New Year's Greeting from Gomonshu Kojun Ohtani



Happy New Year, everyone! At the beginning of this New Year, I would like to extend my best regards to you all.

Throughout the last year, the world suffered from the pandemic of COVID-19, which brought tremendous hardship to many people, and we still are not able to see when normalcy would return to our world. On this occasion, I would like to offer my deepest condolences to those who fell victim to the disease and express my sympathies to those who are currently undergoing treatment.

Meanwhile, in the United States, the media has widely reported systematic discrimination against African Americans, social unrest and division among the general public brought on by the presidential election. It concerns me that many people have been left isolated in the midst of hardship.

“Dependent origination” is a universal truth that Buddha Sakyamuni presented. This fundamental Buddhist principle expresses that every thing, matter, and phenomenon arises from various causes and conditions. None of us lives by ourselves. We are living

while being interconnected and mutually supported by one another. Considering the reality of a divided society, it is important that everyone deeply reflects on the principle of “dependent origination” that represents the true state of the world.

Even though having been introduced to the truth by Buddha Sakyamuni, ordinary people like us are still not able to accept it as it is. Therefore, to guide us to cope with the suffering caused by our own ignorance, Shinran Shonin clarifies Amida Buddha’s compassion that always embraces us all. When the world is facing this unimaginable crisis, it is crucial that each of us experiences Amida Buddha’s great compassion ourselves, and live each day to the utmost, having that joy and sensation in our hearts as the basis of our life.

I have been told that in this difficult time and situation, many of your Sangha have been adopting new measures for sharing the Jodo Shinshu teaching that had not been previously considered. I find such efforts truly reassuring. It is my hope that your temples will continue serving as your spiritual home, and therefore, I sincerely ask for your understanding and cooperation to allow them to be so. With my heartfelt appreciation for each one of you, I would like to conclude my New Year’s greeting.

January 1, 2021

OHTANI Kojun

Monshu, Jōdo Shinshū Hongwanji-ha

* - Gomonshu Kojun Ohtani (Sennyō Shōnin) is the current Gomonshu and 25th head of the Jōdo Shinshū Hongwanji-ha.

The title Gomonshu (ご門主) translates as “Keeper of the Gate” and was traditionally the caretaker of the Shinran Shōnin’s mausoleum.



Message from Bishop Marvin Harada Becoming Settled in Unsettling Times

I don't know how any Americans could say that they weren't terribly disturbed by the events of Jan. 6, when the U.S. Capitol was overcome by insurgents who overwhelmed security and police to not only enter the hallowed building, but to break into the chambers and offices of our government leaders, vandalizing and causing chaos and disruption.

I think we all watched the news on TV as if we were watching some kind of "Die Hard" movie, but this was not a movie. It was actually happening. I think we were shocked, disturbed, and moved to tears. This was our Capitol. This was where Congress convenes and conducts the business of our government. Political affiliations aside, no matter what party you adhere to, it was terribly disturbing to all of us who live in this country, and to those abroad as well.

It leaves us with such an unsettled feeling to see such chaos, to see such a disturbance, and what we consider to be "law and order" broken beyond recognition.

How do we "settle" ourselves amidst chaos and confusion? How do we find a sense of peace and serenity, when we are inundated with such horrific scenes of something in our own country?

I was thinking about what it must have been like for Shinran Shonin, living in Japan during one of the most turbulent periods of Japanese history. There were epidemics, like we are facing with this terrible coronavirus pandemic. There was political instability, leading to much death and destruction. There was famine. People were dying of starvation. On the news, we watch countless fellow citizens who wait patiently in their cars for food from food banks.

In Kyoto, one of the most scenic places is the Kamo River, which runs through the city. The Kamo River has restaurants and bars all along the scenic river. During Shinran Shonin's time, the Kamo River was not lined with restaurants and bars. The river was lined with corpses, from those who died from famine and epidemics.

Right now, an estimated 4,000 people a day are dying from COVID-19 in this country. Hospital ICUs in California are filled beyond capacity. Sick people are in beds in hallways, waiting for a hospital room. Morgues are filled. Mortuaries are backlogged for cremations for weeks. We aren't that much different from people living during the Kamakura Period of Japan.

Yet, despite the horrific time that he lived in, Shinran Shonin found something stable. He found something settled, he found something peaceful, despite all the chaos and confusion that surrounded him.

He found and received the Nembutsu, Namuamidabutsu, as a deep and profound truth that was grounded, timeless, and indestructible. What peace, what joy it must have given him. Only being in chaos can one really appreciate peace and serenity.

(Continued on the next page)

(Continued from previous page)

If we can find one positive thing out of the chaos, confusion, and unsettling times that we are living in today, I hope that we are being led deeper into the Dharma, deeper into the Nembutsu.

To see chaos and confusion in the world only affirms the importance, the value of the Buddha-Dharma. For the people of the Kamakura Period of Japan, the Nembutsu was the one thing, maybe it was the only thing that brought them comfort, peace, serenity, amidst the chaos, the tragedy, the sadness of their time.

Are we that different than those who lived during the Kamakura Period of the 1200s? We don't appear to be. Just as the Nembutsu came to arise and meet the spiritual needs of the people of the Kamakura Period in Japan, may the Dharma, may the Nembutsu begin to rise up in this country, and may many find a sense of peace, a sense of grounding, a sense of stability, a sense of joy, in the truth of Namuamidabutsu.

Namuamidabutsu,
Rev. Marvin Harada, Bishop, Buddhist Churches of America
Buddhist Churches of America



Witness to Wartime

The Painted Diary of Takuichi Fujii

Northwest Museum of Arts & Culture (MAC)

January 23 - May 16, 2021 Open Tuesday-Sunday, 10 am-5 pm
2316 West 1st Avenue, Spokane, Washington 99201 (509) 456-3931

At this time, Museum exhibits are open for private visits only. Groups of up to 6 people from the same household can reserve a 50-minute visit. Tickets must be purchased in advance online or by phone.

Takuichi Fujii (1891 - 1964) was born in Hiroshima in 1891 and moved to the United States when he was 15. His paintings and drawings bare witness to his life in America and, most especially, to his experience during World War II, when Fujii, his wife, and daughters were incarcerated. They were confined first at the Puyallup temporary detention and in August 1942, sent to the Minidoka incarceration camp in Idaho until October 1945.



Marking the 75th anniversary of Executive Order 9066, the forced removal and internment of Japanese-American citizens during World War II, this showing of more than 70 paintings and drawings by Takuichi Fujii chronicles the harsh conditions and daily routine of his incarceration.

northwestmuseum.org



Takuichi Fujii, title page of diary, 1942-1945. Ink



SAVE THESE DATES!
2021 CBE VIRTUAL PROGRAMS
JANUARY ~ APRIL *All events listed in Pacific Time.*

BCA Education is open to all and on line.
For details and registration:
<https://www.buddhistchurchesofamerica.org/buddhist-education>

Upcoming free on line seminars:

<p>SATURDAY FEBRUARY 6 10 am - 11:30 am Register online</p>	<p>EVERY DAY BUDDHISM BOOK TALK "DISCOVERING BUDDHISM IN EVERYDAY LIFE" Speaker/author: Rev. Marvin Harada BCA Bishop <i>Listen to the stories behind this collection of heartwarming essays.</i></p>
<p>SATURDAY FEBRUARY 13 11 am - 1 pm Register online</p>	<p>"HONEN AS RELIGIOUS REVOLUTIONARY: THE PERSON WHO DEFINED THE BUDDHISM WE IDENTIFY AS JAPANESE TODAY." Speaker: Dr. Mark Blum University of California at Berkeley</p>
<p>SATURDAY MARCH 6 11 am - 1 pm Register online</p>	<p>ZEN & SHIN BUDDHISM - PART 1 "LETTING GO: A ZEN & SHIN APPROACH TO LIBERATION" Rev. Dr. Duncan Ryuken Williams Author, <i>AMERICAN SUTRA</i></p>
<p>SATURDAY MARCH 13 11 am - 1 pm Register online</p>	<p>ZEN & SHIN BUDDHISM - - PART 2 <i>(Please note change of date)</i> "ZEN PRACTICE" Speaker: Rev. Anton Tenkei Coppens Roshi Zen River Temple, Netherlands</p>
<p>SATURDAY APRIL 10 5 pm - 6:30 pm Register online</p>	<p>SOCIALLY ENGAGED BUDDHISM Speakers: Prof. Mitsuya Dake Ryukoku University Rev. Kiyo Kuwahara Berkeley Buddhist Temple</p>
<p>SATURDAY APRIL 17 11 am - 1 pm Register online</p>	<p>3 BISHOPS: "WHAT IS THE FUTURE OF BUDDHISM IN THE WEST?" Rev. Marvin Harada Bishop, Buddhist Churches of America Rev. Eric Matsumoto Bishop, Honpa Hongwanji Mission of Hawaii Rev. Tatsuya Aoki Bishop, Jodo Shinshu Buddhist Temples of Canada</p>

(v8)

VISIT BCA WEBSITE FOR UPDATES: FLYER, FREE REGISTRATION LINKS & TO DONATE (OPTIONAL)
BUDDHISTCHURCHESOFAMERICA.ORG EMAIL: CBE@BCAHQ.ORG TEL: 510.809.1460

2021 Pledge Form



Dear Members and Friends:

When you find yourself taking refuge in the Three Treasures (Buddha, Dharma, and Sangha) and feel like this is a place where you would like to grow, then perhaps you'll consider membership to the Spokane Buddhist Temple.

The concept of Dana (selfless giving) is not only a Buddhist teaching but a manner of how we exist and do business. Dana comes in many forms; not only monetary, but also your time and talents. Membership empowers individuals who rely on the nembutsu to remember their responsibility to help sustain the Dharma in Spokane and surrounding area.

By joining or renewing your membership, you honor the legacy of the families and individuals who founded this Temple in 1945 and will help maintain the foundation for the future. Your membership is critical for keeping the Dharma alive in Spokane for the benefit of current and future generations.

**In Gassho,
Spokane Buddhist Temple Trustees**

Membership pledges are made/renewed on a yearly basis every November and can be paid in numerous ways and increments. Pledges can be paid by check, credit card, or an e-check from your financial institution. You can pay annually, semiannually, quarterly, or monthly.

Individuals who make pledges of \$240 or more are sustaining members of the Temple. Those contributing at lower levels are non-voting associate members of the Temple. Although \$240 is the minimum pledging amount for sustaining membership, additional pledges are greatly appreciated. It costs about \$50,000 annually to run the Temple, including: operating expenses, building upkeep, visiting minister costs, our minister's education, and dues to the Buddhist Churches of America (BCA) and the NW District. Membership pledges make up about 25% of our revenue, and we depend on them to be able to keep the Dharma alive in our community.

Printed Name (s) _____ Signature (s) _____

Address _____

Phone numbers _____

Emails _____

Payment method (please check) check e-check cash credit card

Payment frequency (please check) annually semi-annually quarterly monthly

Pledge amount for current year \$ _____

* Please consult your tax advisor for specific questions related to charitable donations.

* If over the age of 70 ½ please consult your financial planner for using your required minimum distribution for charitable donations.

*Members of the Spokane Buddhist Temple are always welcome to request our financial records. Please contact the treasurer if you would like information on the Temple's budget and financial holdings.

Spokane Buddhist Temple, 927 S. Perry, Spokane, WA 99202
Email: SpokaneBuddhistTemple@gmail.com