

Spokane Buddhist Temple

Volume 70 - Issue 1

This newsletter is published monthly by the Spokane Buddhist Temple
 927 S Perry Street
 Spokane, WA 99202
 509 534-7954



Everyone is welcome to attend all activities and services. Visit us online at:
www.spokanebuddhisttemple.org
 email: spokanebuddhisttemple@gmail.com
www.Facebook.com/SpokaneBuddhistTemple

January 2024

January Service Schedule - 10:30 am

1/7	10:30 am	Shotsukihoyo Sangha Service
1/14	10:00 am	Joint NW Temples' Hoonko Service — See Pg 3 & below Installation of Board Members and Welcome New Members
1/21	9:30 am	Chanting Workshop with Reverend Kusunoki
1/21	10:30 am	Sangha Service with Reverend Kusunoki
1/28	10:30 am	Sangha Service
	10:30 am	Dharma School for Ages 4-11
	11:15 am	Etiquette Class upstairs - see below

See Page 4 for info about the Seattle Betsuin arson fire and how to donate.



Spaghetti Dinner at SBT

SAVE THE DATE - FRIDAY - FEBRUARY 2 - 6PM

Enjoy a spaghetti dinner (vegetarian or meaty) at the temple dining room. A chance to visit with and get to know your Minister Assistants, Board of Directors, long time and new temple members.

1/28 Etiquette Class - 11:15 after Service

Why do we bow when we enter the Hondo? What does "Gassho" mean?
 What are the items up on the naijin (altar) called?
 Why do we put our hands together and say Namuamidabutsu at the end of chanting? What is a koro?



Come back upstairs after a brief coffee time to learn these things and more.



**Joint NW Buddhist Temple's Hoonko Service
 Shinran Shonin's Memorial Service**

Live Streaming at the Temple - 1/14 - 10 am

NOTE: Service starts 1/2 hour early — See Page 3

Hoon-ko commemorates the death of the founder of Shin Buddhism, Shinran Shonin. This holiday is among the most important observed in the Jodo Shinshu tradition. The observance began after Shinran's daughter, Kakushinni carried on administration of Shinran's mausoleum, as did her descendants, who ultimately became the Monshu of Jodo Shinshu. In the word hōonkō; 'hōon' means "return of gratitude" and 'ko' means "to clarify the meaning of" or "gathering".

Spokane Buddhist Temple

JANUARY 2024

VOLUME 70 ISSUE 1



Sangha Services— Our Sangha Service (Sangha is the Sanskrit word for Buddhist community) is a traditional Jodo Shinshu service with chanting led by a Doshi. Services are at 10:30 am on Sundays at the Temple. We meet after service for refreshments and sometimes a dharma discussion.

- ◆ **GET THIS NEWSLETTER BY EMAIL**
Email: SpokaneBuddhistTemple@gmail.com
- ◆ Check out our website at **www.SpokaneBuddhistTemple.org**
- ◆ **For the latest Temple Information visit our Facebook page:** www.facebook.com/SpokaneBuddhistTemple
- ◆ Visit the **Buddhist Churches of America** Website: www.BuddhistChurchesofAmerica.org
There is a wealth of information, podcasts, and information about Shin Buddhism on this site.



Rinban Katsuya Kusunoki
our Supervising Minister

Spokane Buddhist Temple
Minister Assistants Team:
Chad Donoho
Eric Kerkove
Amanda Goodwin



Spokane Buddhist Temple Team

--Supervising Minister--

Rev. Katsuya Kusunoki
Seattle Betsuin

---Minister Assistants---

Amanda Goodwin
Chad Donoho
Eric Kerkove

Reverend Paul Vielle (ret.)

---Welcome New and Continuing
2024 Board of Directors---

Joe Bracco
Sadina Henderson
Tina Rodeen
Susan Hales
KNona Liddell
Ryan Campanella
Celeste Sterrett
Izumi (Jacqui) Pierce
Ally Rice

Mari Haworth, Bookkeeper
Chad Donoho, Religious
Education Committee
Representative



Chanting At Home

Follow these links to access recordings of the following:

- Juseige https://www.buddhistchurchesofamerica.org/home/001_juseige_chanting/
- Sanbutsuge https://www.buddhistchurchesofamerica.org/home/002_sanbutsuge_chanting/
- Junirai https://www.buddhistchurchesofamerica.org/home/003_junirai_chanting/
- Ondokusan https://www.buddhistchurchesofamerica.org/home/004_ondokusan_gatha/

We will live stream the service on Sunday Jan 14th at **10 am** at the Spokane Buddhist Temple. You can watch the Saturday 1/13 workshops and services at 9:30am-12:30pm from home.

2024 NORTHWEST DISTRICT HO'ONKO SERVICE JANUARY 13 & 14



REV. KATSUYA KUSUNOKI

Seattle Betsuin Buddhist Temple



REV. TADAO KOYAMA

Tacoma Buddhist Temple



REV. CYNDI YASAKI

White River Buddhist Temple



REV. YOSHIMICHI OUCHI

Toronto Buddhist Temple

ALL ARE WELCOME TO ATTEND!

REGISTRATION AVAILABLE AT SEATTLEBETSUIN.ORG

SEATTLE BETSUIN BUDDHIST TEMPLE
1427 S MAIN ST
SEATTLE WA 98144

"Our Founder Shinran Shonin's Memorial Day Observance"

Saturday, January 13th

9:30 am
Workshop 1: "On Goeden Scroll 'Who is Shinran?'" - Rev. Kusunoki

10:00 am
Workshop 2: "Chanting Practice of Hymns of Birth in the Pure Land (Ojoraisan)" - Rev. Ouchi

10:40 am
English Dharma Talk - Rev. Yasaki

11:00 am
Special/Hoonko Ritual "Ojoraisan" - Chanting Leader: Rev. Kusunoki

12:00 pm
Workshop 3: "Tour of the Altar (Naijin)" - Rev. Kusunoki



Sunday, January 14th

10:00 am
Hoonko Service "Shuso Sango Saho Music service" with Gagaku, Taiko and Keyboard
Chanting Leader: Rev. Yasaki
English Dharma Talk: Rev. Ouchi

10:50 am
Japanese Dharma Talk: Rev. Ouchi
Combined English Dharma Exchange: Rev. Koyama

11:30 am
'Otoki' - Light refreshments in the Gym



Links:

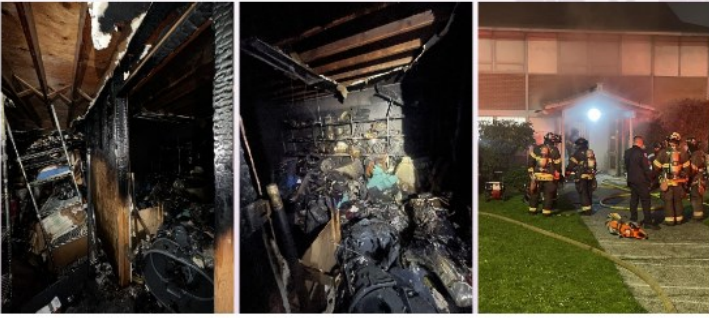
Saturday 1/13:

<https://www.youtube.com/live/Bz-D-4rijOM?si=WwXIBs2YNZ0atoXt>

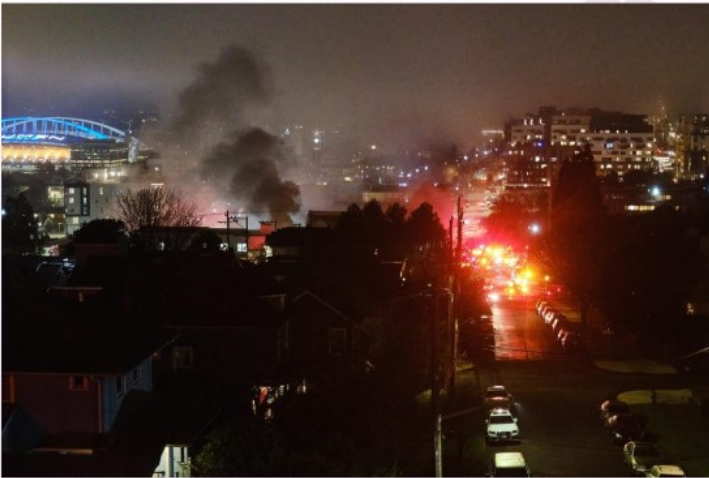
Sunday 1/14:

<https://www.youtube.com/live/t-qDoEV25Vc?si=zXkmp8PN2YGNSief>

Fire At The Seattle Betsuin



At 10:00 pm on December 31, 2023, an intruder broke into the temple and sought refuge in the basement. Shortly after, the individual committed arson, resulting in considerable fire and water damage to the basement area. The smoke and water damage extended throughout the entire temple, prompting its closure to all.



Efforts are underway to assess the costs of repairing the damage caused. Fortunately, no one was injured. The Hondo (main hall) and the Nokotsudo (columbarium) managed to be unscathed from the fire.

In light of this unfortunate situation, we see an opportunity for renewal, rebuilding, and reaffirming our mission to share the message of the Buddha. We would like to express our sincere gratitude to the community for the outpouring of support.

As we navigate our restoration journey, you may stay connected with us by visiting the Seattle Betsuin webpage for updates. For those who would like to make a donation to our Arson Restoration Fund, please visit the link below or find that link on the website: SeattleBetsuin.com.

Contributions can also be made via check – please make checks payable to “SEATTLE BUDDHIST CHURCH” and include “Arson Restoration Fund” in the memo line.

Your kindness and concern are deeply appreciated, and we invite you to share in the successes fueled by your generosity. Thank you for contributing to a collective effort that transcends bricks and mortar.

Seattle Betsuin Buddhist Temple – 1427 S. Main Street, Seattle, WA 98144

Seattle Betsuin Arson Restoration Fund link:
<https://donate.stripe.com/7sIcNfdwRdi59TW8wy>

Seattle Times article:
<https://www.seattletimes.com/seattle-news/law-justice/arson-closes-seattle-buddhist-temple-destroys-century-old-archives/>



Thank you to those who have sent a donation to the Temple
in memory of our friend Eric Inaba.
A celebration of life is being planned for April 2024.

We have set up an **“Eric Inaba Shin Buddhist Education Fund”**
with these donations, which will be used for education costs for our
Assistant Ministers and the Sangha.

Donations In Memory of Eric Inaba have been received from:

Fred & Lianne Inaba

Mary Schweitzer	Albert & Ellen Eng
Olivia & Bob Waterman	David & Darla Port
Leslie & GT Wong	Robert & Lynne Ishikawa
Lisa Geiss	Kathleen Emtman
Lauren Hashikumi	Annette Pettenger
Steve & Reiko Tsuchida	Daren A Yamada
The Cesar & Nelly Zamora Family	
Gary & Judy Oda	The Tonooka Family
Diane & Darryl Inaba	Richard & Francis Law

Dues and Donations

We are grateful for your donations and dues, which offset our expenses. You are helping us keep the doors open at the Spokane Buddhist Temple and continue to spread the Dharma. To donate, either click on the Donation button on the website, or email a check to us. If you want 100% of your donation to go to the Temple, please send a check or do a BillPay transaction through your bank.

Dues & Donations received in December 2023:

Kris Birdsell	Tricia Ohashi
Wednesday Meditation Group	Tuesday Meditation Group
Stacy Carr	Amanda Goodwin
Paul & Karen Vielle	Izumi Pierce
Loren & Carolyn Nishimura	Chris Nerison
Lena Cooley	Richard Terao
Harumi Norasakkunkit	
Chad Donoho	Tyler Hanson
Mary Naber	Kiku Terao
Eric Kerkove	Martena Peterson

We are also grateful for the cash donations left on Sunday and bookstore purchases.



The SBT Minister Assistants say Arigato
Our New Year's Sale & Service
IT WAS A BIG SUCCESS!

Thank you to all of the excellent volunteers who made this Joya-E Service and annual sale a big success. We especially appreciate those who donated Japanese items for the sale. Thank you to the anonymous underwriter. You helped raise \$1500 for the education of the Temple's Minister Assistants and had fun serving the community.

January Shotsuki-Hoyo



On January 7th, as part of our service, we will have the monthly Shotsuki-Hoyo remembrance service. According to Temple records and other sources, a total of 15 people passed away during the month of January of their respective year:

If you wish to have someone added to the Shotsukihoyo list, see one of our Minister Assistants.

Asayo Heyamoto
James Horiuchi
Peter Low Kelsey
Sagata Kuwahara
Gregory Matazo Soejima
(Mrs) Sakae Wakayama
Manichi Yamaguchi
Mary Terao

Michael Higashi
Sue Ounpikul
James Kiyaichi Koga
(Mrs.) Shige Ida
Grover C. Twiner
Richard Williams
Jake Normandin

SOUTHERN DISTRICT/CBE/JSIO/SDMA

WINTER PACIFIC SEMINAR JANUARY 27, 2024

BUDDHISM AND WAR

“May there be peace in the world.” - Shinran Shonin

IN PERSON & VIRTUAL EVENT (9AM - 12PM)

Keynote Speaker (In English and Japanese)



REV DR KEN TANAKA

English Speakers

Rev Iwohara
Rev Turner
Rev Quon

Japanese Speakers

Rev Wondra
Rev Furumoto

GARDENA BUDDHIST CHURCH

1517 WEST 166TH ST, GARDENA, CA 90247

REGISTRATION INFO & IN-PERSON BENTO ORDER:

<https://tinyurl.com/WINTERPACSEM>

DIAL THE DHARMA

Call the toll free number - 800-817-7918 to hear Bishop Harada's message

Push "1" for English and "2" for Japanese

SEE THE BCA'S EVENT PAGE for info and links to the many workshops & learning opportunities:

<https://>

www.buddhistchurchesofamerica.org/buddhist-education

SPOKANE BUDDHIST TEMPLE 2024 MEMBERSHIP

We are profoundly grateful for your interest in the Spokane Buddhist Temple. By joining or renewing your membership, you honor the legacy of those who founded this Temple in 1945 and help provide a broad and deep base of support to sustain the sangha far into the future. Your membership pledge is an acknowledgment of your commitment to bringing the Dharma to the Spokane area so that everyone interested can hear the teachings of the Buddha and learn about the rich heritage of Jodo Shinshu Buddhism.

Your pledge is a concrete example of dana, or selfless giving. Dana is usually listed first among the Buddhist paramitas, or virtues to be cultivated. At the Spokane Buddhist Temple (SBT), this takes the form of pledges and monetary contributions, gifts in kind, and volunteer efforts to maintain the Temple and sustain the sangha.

Membership Levels and Benefits

Sustaining Members pledge \$300 per year or more.

Young Members are under 30 and pledge \$50 per year.

Both sustaining and young members are eligible to serve as Trustees and can vote in all Temple elections. They are members of our parent organization, the Buddhist Churches of America, and receive the Buddhist Churches of America's (BCA) monthly publication The Wheel of Dharma.

When To Pledge and How To Pay

Renewals are due in November. This facilitates our planning and budgeting for the upcoming year. New members who join earlier in the year can pledge a prorated amount of \$25 per month; please consult the SBT treasurer or bookkeeper.

Pledge payments can be made in the following ways:

check

credit card

e-check from your financial institution

cash

You can choose the number of separate payments you make:

annual (1 payment)

semi-annual (2 payments)

quarterly (4 payments)

monthly (12 payments)

Where Your Money Goes

Membership pledges and other cash donations from sangha members make up close to a third of SBT's annual revenue. Although as a religious nonprofit we do not pay property tax on the Temple, our expenses include utilities, insurance, building and grounds maintenance, security, travel and honoraria for visiting ministers, subsidies for ministers' education, and dues to the BCA and NW District. SBT spends a total of about \$60,000 each year to bring the Dharma to Spokane.

Tax Info

If you itemize your Federal income tax, you may be able to deduct your contributions to the Temple. If you take a Required Minimum Distribution from your retirement accounts, you may be able to designate those funds to go to SBT. Please consult a tax professional for details applicable to your situation.

What We Do With Your Information

We provide your name and mailing address to the Buddhist Churches of America. We do not share any information about sangha members with any other individuals or organizations.

SPOKANE BUDDHIST TEMPLE 2024 PLEDGE FORM

Amount pledged for Spokane Buddhist Temple membership for 2024: _____

Additional donation to support Temple activities in 2024: _____

Method of payment (check one): check _____; e-check _____; credit card _____; cash _____

Frequency of payment (check one): annually _____; semi-annually _____; quarterly _____; monthly _____

Please return your completed pledge form to the SBT office, and consult the SBT Treasurer for further details, if needed. Members will receive a summary of all pledges and contributions they made in 2024 in January 2025.

Name(s) (PRINTED):

Signatures(s):

Phone(s):

Email address(es):

Mailing address:



Spokane Buddhist Temple
927 S Perry Street Spokane, WA 99202
509-534-7954
www.SpokaneBuddhistTemple.org
SpokaneBuddhistTemple@gmail.com